



## 89 Series Three Piece Stainless Steel Ball Valves

2 Otter Court, Raymond, New Hampshire 03077 • Tel. (603) 244-7931 • [service@geminivalve.com](mailto:service@geminivalve.com) • [www.geminivalve.com](http://www.geminivalve.com)



### FEATURES

- **Ease of Serviceability Design with Low Long-Term Cost to Maintain**
- **Wear Components can be Quickly and Cost Effectively Replaced Essentially Enabling the Valve to Remain in Service Throughout its Intended Life**
- **Unique Two-Piece Pipe Adaptor Enables Flanges to Rotate Independently of Pipe Connectors with Mating Counterbore allows for Accurate Alignment of Pipe Ends to Valve Center Section**
- **Two Piece Pipe Adaptor Eliminate Possibility of Body Seal Leakage Due to Seal Face Distortion, even if the Assembly Bolts are Over-tightened**
- **Available with Pneumatic and Electric Actuators**

**G**emini's 89 Series Three Piece Stainless Steel Ball Valves are ideal for those applications where ease of serviceability and low long term cost to maintain is desirable.

After the initial purchase of the valve wear components such as seals, balls and stems can be replaced quickly and cost effectively essentially enabling the valve to remain in service throughout its intended life.

In addition to the traditional features offered with three piece construction Gemini's unique two piece pipe adap-

tors allow the flanges to rotate independently of the pipe connectors. This combined with a mating counterbore on the pipe flanges allows quick accurate alignment to the valve center section. The assembly bolts screw directly into the assembly flanges. There are no assembly nuts to be dropped or lost when installing or servicing the valve.

Valve body, ball and stem materials are stainless steel which provide excellent durability and corrosion resistance. Seals are Reinforced P.T.F.E. (Teflon®), Body Seals Viton®.

Optional Seals available upon request.

Offered in 1/4" - 2" NPT female screwed end, socket weld, tube socket weld, and others upon request.

In addition to these unique features, the traditional three piece advantages have been retained. For applications requiring welded connections, the valve can be readily disassembled, the ends welded into the line, and then quickly and easily reassembled.

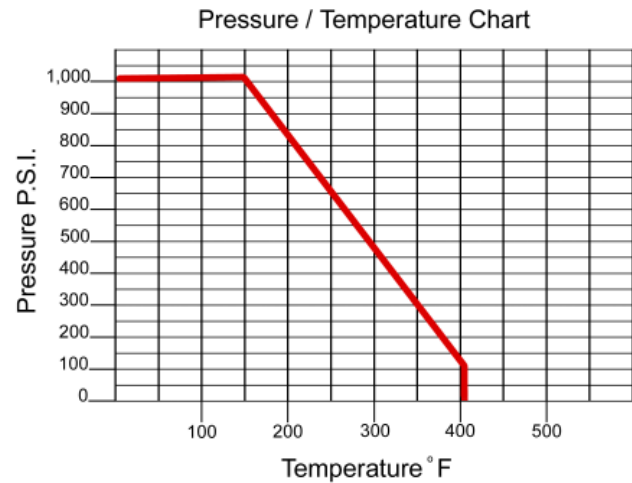
# Product Specifications

## Connection - Style

Pipe / N.P.T.F. (Dryseal National Pipe Taper)  
B.S.P.T. (British Standard Pipe Taper)  
SW - Socket Weld  
TSW - Tube Socket Weld

## Ratings

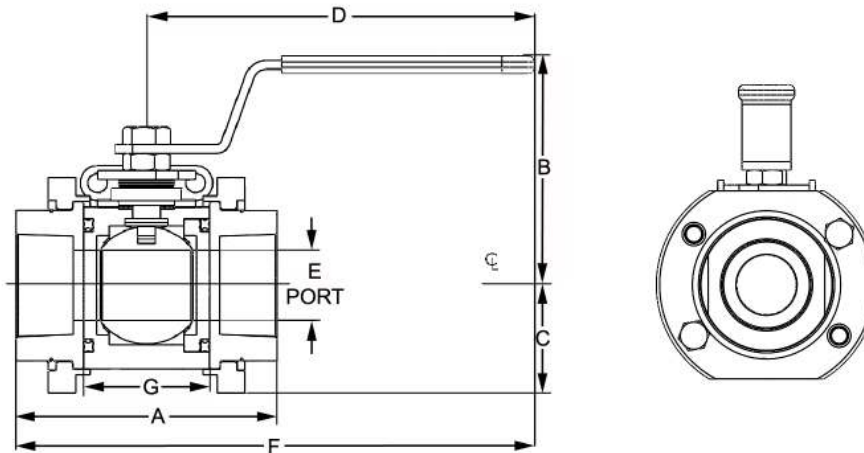
**TEMPERATURE\***: -20°F to 400°F  
**PRESSURE\***: 1,000 P.S.I.\*\* C.W.P.\*\*\*  
**VACUUM**: 20 Micron  
**SATURATED STEAM**: 150 p.s.i.  
\*also see Pressure Temperature Chart  
\*\* C.W.P. = Cold Working Pressure to 150°F  
\*\*\* p.s.i. = Pounds Per Square Inch



## Materials of Construction

**BODY & CONNECTORS**: 316 / 316L Stainless Steel ASTM A276  
**BALL AND STEM**: 316 Stainless Steel - ASTM A276  
**FLANGES**: CF8M Stainless Steel  
**SEATS AND STEM SEAL**: Glass Reinforced P.T.F.E. (Teflon®)  
**BODY SEALS**: Viton® (optional EPR, Silicone and Teflon â Encapsulated Viton ®available)  
**BODY**: Stainless Steel ASTM A276  
**BALL AND STEM**: 316 Stainless Steel - ASTM A276  
**SEATS AND STEM SEAL**: Glass Reinforced P.T.F.E. (Teflon®)

## Dimensions



Valve Size			Dimensions - Inches						
Standard Port	Full Port	Port Diameter	A	B	C	D	E	F	G
1/2	1/4 & 3/8	0.5	2.34	2.25	1.09	5.38	0.5	7.00	1.50
3/4	1/2	0.6	3.38	2.37	1.18	5.38	0.6	7.07	1.50
1	3/4	0.8	3.74	2.62	1.43	5.38	0.8	7.23	1.50
1-1/4	1	1.0	4.57	3.70	1.60	6.82	1.0	9.10	2.25
1-1/2	1-1/4	1.2	4.65	4.08	1.92	6.82	1.2	9.15	2.25
2	1-1/2	1.5	5.13	4.19	2.00	6.82	1.5	9.38	2.25



2 Otter Court  
Raymond, NH 03077

Tel. (603) 895-4761  
FAX (603) 895-6785  
www.geminivalve.com  
SL08-1711