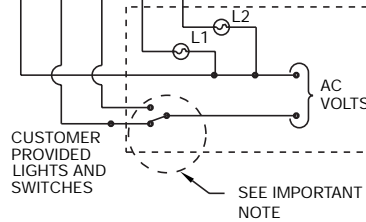
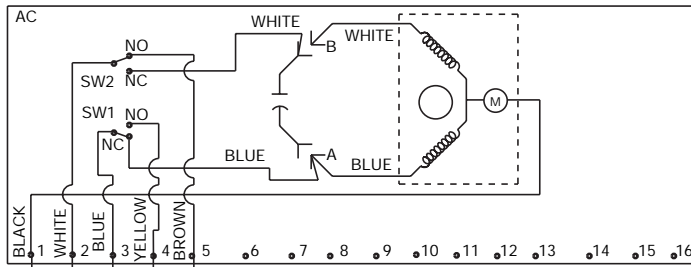
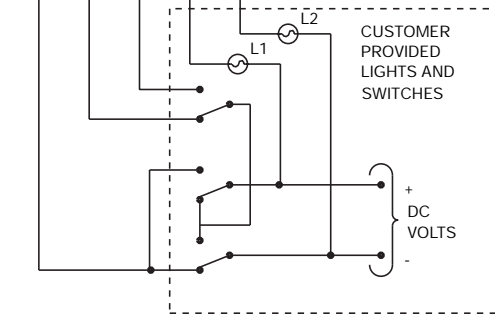
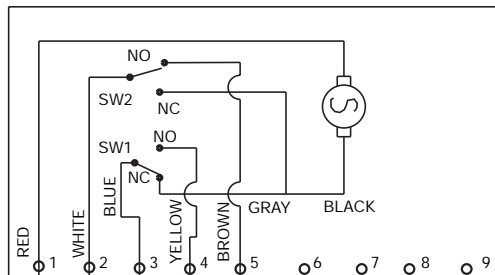


AC WIRING DIAGRAM



- NOTES:
1. Actuator shown in counter-clockwise extreme of travel, or "OPEN" position
 2. Each actuator must be powered thru its own individual switch contacts to avoid cross feeds
 3. Wiring as shown is for S92 AND A92 motor leads at "A" and "B" are reversed for B92
 4. Motor has a thermal protector as shown by (M) in diagram

DC WIRING DIAGRAM



- NOTES:
1. Actuator shown in counter-clockwise extreme of travel, or "OPEN" position
 2. Motor leads are reversed for 1,100 and 2,000 in-lbs
 3. Connections for "OPEN" or "CLOSED"
- | | | |
|---|---|---------|
| 1 | 2 | 3 |
| - | + | = OPEN |
| + | - | = CLOSE |

ACTUATOR OPTIONS

